

Kountry WOOD

CABINETS WORTH OWNING



2024 CABINET LIST PRICES

HANDICAP & HANDICAP ACCESSIBLE CABINETS

EFFECTIVE JANUARY 2, 2024

TABLE OF CONTENTS

GENERAL INFORMATION

Handicap / Handicap Accessible Compliance	2
Wood & Paint Characteristics & Variations	2
Product Matrix	3
KDEX Information	5
Part Number / SKU Nomenclature	5
Cabinet Options	6

BASE CABINETS

Bases	7
Range and Sink Bases	7
3-Drawer Bank Cabinets	8
Diagonal Sink Bases	8
Base Angle Cabinets	8
36 x 36 Corner Cabinets	9
Microwave Bases	9
Tray Cabinets	9
Blind Corner Bases	10

VANITY CABINETS

Vanity Sink Bases	11
Vanity Sink - Top Drawer	11
Vanity Bases	12
Vanity Sink - Drawer Banks (Right or Left)	12
Vanity Drawer Bases	13
Vanity Sink - Center Drawer	13
Vanity Sink - Drawer Bank Each End	13
Vanity Starters	14
Utility Cabinet with Drawers	14

WALL-MOUNT & REMOVABLE

Removable Sink Bases	15
Wall-Mount Sink Brackets	15
Combination Sink Bases	15

TALL CABINETS

Oven Cabinets	16
2-Shelf Kits for Oven Cabinets	16
Utility Cabinets	17
4-Shelf Kits for Utility Cabinets	19

TOE KICKS AND PANELS.....21



KITCHEN CABINET
MANUFACTURERS ASSOCIATION®



KITCHEN CABINET MANUFACTURERS ASSOCIATION
ENVIRONMENTAL STEWARDSHIP PROGRAM (ESP).
ALL PRODUCTS IMPACT THE ENVIRONMENT.
FOR ESP PROGRAM CRITERIA, VISIT KCMA.ORG



NATIONAL
KITCHEN+BATH
ASSOCIATION

HANDICAP / HANDICAP ACCESSIBLE – COMPLIANCE

Kountry Wood Products has made every effort to provide a range of Handicap/Handicap Accessible products to assist its customers with meeting the ADA Standards for Accessible Design.

Customer bears the responsibility of determining compliance with applicable regulations and standards pertaining to Accessible Design and should consider the overall room design, product installation, and other end-use variables.

Kountry Wood Products makes no warranty as to compliance with the ADA Standards for Accessible Design or any other federal, state or local regulation, standard or requirement pertaining to Accessible Design.

WOOD AND PAINT - CHARACTERISTICS & VARIATIONS

Wood - Naturally occurring variations in wood such as color, grain, mineral streaks and knots are not considered defects.






Color variations are a natural occurrence due to species, age, character of cabinets, and exposure to UV light and sunlight. Such variations and changes are not considered defects. For these reasons, new and/or replacement cabinets may not match display samples and/or existing cabinets.

Warping is the bending or twisting of a part. To measure a door or shelf, lay the product on a flat surface and measure the gap from the surface to the part. The standard allowable tolerance for wood is $\frac{1}{8}$ " per lineal foot. Materials that fall within specification are considered acceptable, as a part of the natural characteristics of wood.

Paint finishes are uniquely different from standard wood finishes. On all wood products, expansion and contraction are typical due to changes in climate conditions. Due to this normal movement, paint finishes may develop slight separation lines, finish breaks and seam lines. These will be most notable at stile, rail and panel joints. Joint separations may become more noticeable over time and through season changes.

With the use of select hardwoods and veneers, some of the grain pattern and wood characteristics (checks & pin knots) as well as seams & joints will remain visible through the paint finish. These are normal and are not considered quality defects.

Seam lines and finish breaks are normal characteristics of paint finishes and should not be considered a reason for product replacement. Over time, there may be a slight color shift, due to exposure to natural and artificial light.

Product Matrix						
Price Column ▶	A			B		
Door Style ▶	Harmony	Mission	Durham Full Overlay Only	Georgetown	Youngstown	Vanderburgh
Finish & Species ▼						
	FLAT PANEL (5-Piece Drawer Optional)	SLAB	SLAB	SHAKER (5-Piece Drawer Optional)	SHAKER FLAT PANEL (5-Piece Drawer Optional)	MITERED FLAT PANEL (5-Piece Drawer Optional)
Auburn Maple	✓	✓	✓	✓	✓	✓
Coffee Maple	✓	✓	✓	✓	✓	✓
Natural Maple	✓	✓	✓	✓	✓	✓
Onyx Maple	✓	✓	✓	✓	✓	✓
Pecan Maple	✓	✓	✓	✓	✓	✓
Sandstone Maple	✓	✓	✓	✓	✓	✓
Slate Maple	✓	✓	✓	✓	✓	✓
Toffee Maple	✓	✓	✓	✓	✓	✓
Lava Cherry	✓			✓	✓	✓
Cobblestone Oak	✓			✓	✓	
Fairfield Oak	✓			✓	✓	
Kountry Oak	✓			✓	✓	
Driftwood Oak	✓			✓	✓	
Painted Limestone*† (Elegant Maple Interior)		✓	✓	✓	✓	✓ Maple
Painted Pearl*† (Elegant Maple Interior)		✓	✓	✓	✓	✓ Maple
Painted White*† (White Interior)		✓	✓	✓	✓	✓ Maple


NOTE: Plywood Veneer Sides N/A in White, Limestone, or Pearl

* Additional charges apply

All Cabinet interiors are Elegant Maple except as noted

† Painted Composite Board except as noted

Product Matrix

Price Column ▶	C		D			E
Door Style ▶	Kingston Full Overlay Only	Urbana Full Overlay Only	Classic	Jamestown Full Overlay Only	Rentown Full Overlay Only	Williamsburg Full Overlay Only
Finish & Species ▼						
	SHAKER (5-Piece Drawer Optional)	NARROW SHAKER (5-Piece Drawer Optional)	RAISED PANEL (5-Piece Drawer Optional)	WIDE RAIL SHAKER (5-Piece Drawer Optional)	WIDE RAIL FLAT PANEL (5-Piece Drawer Optional)	MITERED RAISED PANEL (5-Piece Drawer Optional)
Auburn Maple	✓	✓	✓	✓	✓	✓
Coffee Maple	✓	✓	✓	✓	✓	✓
Natural Maple	✓	✓	✓	✓	✓	✓
Onyx Maple	✓	✓	✓	✓	✓	✓
Pecan Maple	✓	✓	✓	✓	✓	✓
Sandstone Maple	✓	✓	✓	✓	✓	✓
Slate Maple	✓	✓	✓	✓	✓	✓
Toffee Maple	✓	✓	✓	✓	✓	✓
Lava Cherry	✓		✓	✓		✓
Cobblestone Oak	✓		✓	✓		
Fairfield Oak	✓		✓	✓		
Kountry Oak	✓		✓	✓		
Driftwood Oak	✓		✓	✓		
Painted Limestone*† (Elegant Maple Interior)	✓	✓		✓	✓	
Painted Pearl*† (Elegant Maple Interior)	✓	✓		✓	✓	
Painted White*† (White Interior)	✓	✓		✓	✓	

NOTE: Plywood Veneer Sides N/A in White, Limestone, or Pearl

* Additional charges apply

All Cabinet interiors are Elegant Maple except as noted

† Painted Composite Board except as noted



KDEX is our online dealer portal. It is designed to provide Kountry Wood Products dealers with the following functionality:

1. **Submit orders electronically** to Kountry Wood Products.
2. **Upload 20-20 kitchen designs** into KDEX to facilitate the submission of those orders online.
3. Download the latest version of our **20-20 Catalog**. (A change log for our 20-20 Catalog is also available for download.)
4. Download the latest versions of our printed **Price Book** and other Kountry Wood Products **Documents and Forms**.
5. View **Announcements** of new releases and updates to the Price Book, 20-20 Catalog, KDEX, and other important changes.

To request a KDEX user account...

1. If you are a dealer with an active Kountry Wood Products account, then you are eligible for a KDEX account!
2. Go to www.kountrywood.com and click on DEALERS at the top of the page.
3. Click on the "Request Account" link below the large KDEX logo.
4. Fill in the online form and click the [Submit] button.
5. Within 1 business day, you should receive an email from Kountry Wood confirming the activation of your KDEX account.
6. Then just go back to www.kountrywood.com and click on DEALERS at the top of the page and login.

Get the KDEX basics from the "KDEX User Instructions" PDF document - available for download from the Resource Center on the KDEX Home page.

PART NUMBER / SKU NOMENCLATURE

	----- ITEM NUMBER -----				Door Style	Door Option	Color Species	Cabinet Options
	Cabinet Type	Cabinet Width	Cabinet Depth	Cabinet Height *				
CHARACTERS	1-3	4-5	6-7	8-9	10-11	12-13	14-16	17-22
EXAMPLE	BAS	30	24	HH	GX	03	STX	V
	BAS3024HHGX01STXV - Base 30" [BAS3024HH], Georgetown [GX], Butt Doors [01], Slate [STX], Premium & Plywood Veneer [V]							

* Cabinet Height (chars 8-9): Tall (2 digits), Handicap (HH), or Handicap Accessible (HA)

Door Style Codes

CX = Classic	DX = Durham	GX = Georgetown	HX = Harmony	JX = Jamestown	KX = Kingston
MX = Mission	RX = Rentown	UX = Urbana	VX = Vanderburgh	WX = Williamsburg	YX = Youngstown

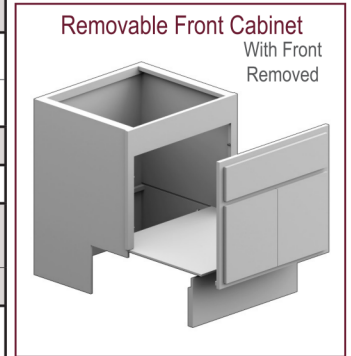
Color Species Codes

CHERRY/STAINED	MAPLE/STAINED		OAK/STAINED	HDF/PAINTED
LXX = Lava	ABX = Auburn	PCX = Pecan	CBX = Cobblestone	LSX = Limestone
	CFX = Coffee	STX = Slate	DWX = Driftwood	PEX = Pearl
	NXX = Natural	SSX = Sandstone	FXX = Fairfield	WHX = White
	ONX = Onyx	TFX = Toffee	KXX = Kountry	

HANDICAP CABINET OPTIONS

NOTE: CABINET OPTION PRICES ARE ADDED TO THE LIST PRICE AND ARE CUMULATIVE.

OPTION	DESCRIPTION	PER CABINET
02	FULL HEIGHT DOOR: BASE CABINETS ONLY	59
03	GLASS DOOR PREP • TOP DOOR(S) ONLY on UHC, UAC Utilities • N/A on UH2, UA3 Utilities, or Base Cabinets	32
05	MULLION DOOR • SEE SPEC BOOK FOR IMAGES • TOP DOOR(S) ONLY on UHC, UAC Utilities • N/A on UH2, UA3 Utilities	SINGLE DOOR CABINET (<= 24" WIDE)
		2 OR 4 DOOR CABINET (>=27" WIDE)
100	3/4" MDF SHELF: AVAILABLE ON STANDARD CONSTRUCTION ONLY	15
102	3/4" PLYWOOD SHELF: AVAILABLE ON PREMIUM CONSTRUCTION ONLY	63
VM	MATCHING INTERIOR [M]: [STAIN FINISHES ONLY] - REQUIRES PREMIUM AND PLYWOOD VENEER [V] • EXAMPLE: HARMONY WAL303012 (LIST PRICE x 2) + PREMIUM + VENEER [V] = (\$302 x 2) + \$93 + \$73 = \$770	2 x LIST PRICE
DI	MATCHING PAPER INTERIOR [I]: [LIMESTONE / PEARL PAINTS ONLY] REQUIRES PREMIUM (D)	2 x LIST PRICE
BRF, VRF	REMOVABLE FRONT CABINET: (SEE IMAGE AT RIGHT) • AVAILABLE ONLY ON SINK BASES AND VANITY SINK BASES • REPLACE "BSB" or "VSB" PREFIXES WITH "BRF" OR "VRF" • NOTE: SIZES UNDER 33" WIDE MAY NOT ALLOW WHEELCHAIR ACCESS	2 x LIST PRICE
FR	CABINET FRONT ONLY: NO CABINET BOX; INCLUDES FACE FRAME, DOORS, AND DRAWER FRONTS	0.75 x LIST PRICE



SOFT CLOSE OPTIONS

OPTION	DESCRIPTION	PRICE	
28	SOFT CLOSE HINGES • DOORS WITH 2 HINGES RECEIVE 1 SOFT CLOSE HINGE. (EXCEPTION: DOORS LARGER THAN 17" X 21" RECEIVE 2 SOFT CLOSE HINGES.) • DOORS WITH 3 HINGES RECEIVE 2 SOFT CLOSE HINGES.	25	PER CABINET
S	SOFT CLOSE WOOD DRAWERS (FULL EXTENSION) • NOT AVAILABLE IN 18" DEEP VANITIES	STANDARD	96
		PREMIUM	51

OPTION	DESCRIPTION	PRICE	
W	ALL WOOD DRAWER BOX INCLUDED ON CABINETS 27" - 36" WIDE	45	PER DRAWER
06	5 PIECE DRAWER FRONT OPTION: NOT AVAILABLE ON DURHAM OR MISSION	52	PER DRWR FRT

PREFIX	DESCRIPTION	PER TRAY
ROS	ROLL OUT SHELF FOR BASE CABINET • FACTORY INSTALLATION OPTION ◦ 1 LEVEL: TRAY(S) INSTALLED AT THE BOTTOM OF THE CABINET. ◦ 2 LEVELS: 1ST LEVEL OF TRAY(S) INSTALLED AT THE BOTTOM OF THE CABINET. 2ND LEVEL OF TRAY(S) SPACED EVENLY ABOVE.	113
ROSU	ROLL OUT SHELF FOR UTILITY CABINET • FACTORY INSTALLATION OPTION ◦ 2 LEVELS: 1ST LEVEL OF TRAY(S) INSTALLED AT THE BOTTOM OF THE CABINET. 2ND LEVEL OF TRAY(S) SPACED EVENLY ABOVE (21" SPACE). ◦ 4 LEVELS: 1ST LEVEL OF TRAY(S) INSTALLED AT THE BOTTOM OF THE CABINET. 2ND - 4TH LEVEL OF TRAY(S) SPACED EVENLY ABOVE. (10" SPACE).	113

OPTION	DESCRIPTION	12" & 15" WALL Cabinets	18" - 24" WALL Cabinets	27" & 30" WALL Cabinets	36" & 42" WALL Cabinets	BASE Cabinets	VANITY Cabinets	TALL Cabinets
P	PLYWOOD VENEER SIDES (Standard Construction)	67	90	95	111	145	132	309
V	PLYWOOD VENEER SIDES (Premium Construction)	50	66	73	81	108	98	231

BASES

MODEL NUMBER	ITEM NUMBER	LIST PRICES					ADD TO LIST PRICE	CUBES
		Harmony Mission A	Durham Georgetown Vanderburgh Youngstown B	Kingston Urbana C	Classic Jamestown Rentown D	Williamsburg E		
HANDICAP BASE CABINETS 12 - 24 W (1 Door; 1 Drawer)								
HB12	BAS1224HH	344	364	386	416	496	104	6.0
HB15	BAS1524HH	368	384	407	426	510	104	7.5
HB18	BAS1824HH	385	402	426	459	539	104	8.5
HB21	BAS2124HH	398	416	441	466	546	104	10.0
HB24	BAS2424HH	449	472	500	528	613	104	11.5
HANDICAP BASE CABINETS 24 - 36 W (Butt Doors; 1 Drawer)								
HB27	BAS2724HH	466	486	515	542	629	124	13.0
HB30	BAS3024HH	496	525	557	585	678	124	14.5
HB33	BAS3324HH	531	552	585	609	701	124	16.0
HB36	BAS3624HH	542	567	601	622	711	124	17.0
HANDICAP BASE CABINETS 39 - 48 W (2 Doors; 2 Drawers)								
HB39	BAS3924HH	547	574	608	641	735	140	18.5
HB42	BAS4224HH	566	592	628	665	763	140	20.0
HB45	BAS4524HH	581	610	647	686	781	140	21.5
HB48	BAS4824HH	598	626	664	704	799	140	23.0
HANDICAP RANGE AND SINK BASES 24 W (1 Door; No Drawers. Butt Door Optional on HSB24)								
HSB24	BSB2424HH	420	440	466	490	580	96	11.0
HANDICAP RANGE AND SINK BASES 27 - 36 W (Butt Doors; No Drawers)								
HSB27	BSB2724HH	435	454	481	505	594	96	13.0
HSB30	BSB3024HH	461	480	509	561	650	96	14.5
HSB33	BSB3324HH	466	486	515	566	655	96	16.0
HSB36	BSB3624HH	498	529	561	612	704	120	17.0
HANDICAP RANGE AND SINK BASES 39 - 48 W (2 Doors; No Drawers)								
HSB39	BSB3924HH	528	549	582	622	711	120	18.5
HSB42	BSB4224HH	546	573	607	629	721	120	20.0
HSB45	BSB4524HH	563	589	624	669	766	120	21.5
HSB48	BSB4824HH	575	605	641	704	799	120	23.0

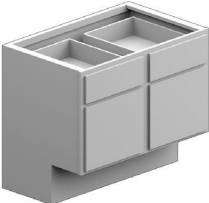
BAS:
12 - 24 W
24 D
32½ H



BAS:
24 - 36 W
24 D
32½ H



BAS:
39 - 48 W
24 D
32½ H



BSB:
24 W
24 D
32½ H



BSB:
24 - 36 W
24 D
32½ H



BSB:
39 - 48 W
24 D
32½ H



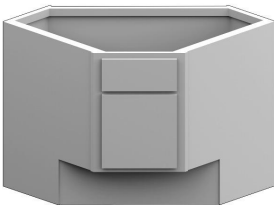
Handicap Accessible:

- Item Number - End with HA instead of HH.
- Model Number - Begin with HA instead of H.

BASES



B3D:
12 - 36 W
24 D
32½ H



BDC or BDI:
BDC - Complete
(shown)
BDI - Face
Frame
and Floor

36x36 or 42x42
32½ H



BAL or BAR:
Height: 32½"
Short Side: 12"
Long Side: 24"
Back: 12"
Front Face:
17½"
Left angle
shown

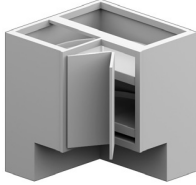
MODEL NUMBER	ITEM NUMBER	LIST PRICES					ADD TO LIST PRICE	CUBES
		Harmony Mission A	Durham Georgetown Vanderburgh Youngstown B	Kingston Urbana C	Classic Jamestown Rentown D	Williamsburg E		
HANDICAP 3-DRAWER BANK CABINETS								
H3DB12	B3D1224HH	424	445	472	488	505	193	6.0
H3DB15	B3D1524HH	444	465	493	511	528	193	7.5
H3DB18	B3D1824HH	469	489	518	539	550	193	8.5
H3DB21	B3D2124HH	489	515	546	562	574	193	10.0
H3DB24	B3D2424HH	511	538	570	588	598	193	11.5
H3DB27	B3D2724HH	659	689	730	738	750	250	13.0
H3DB30	B3D3024HH	685	715	758	767	780	250	14.5
H3DB33	B3D3324HH	820	860	912	918	923	250	16.0
H3DB36	B3D3624HH	949	995	1055	1057	1058	250	17.0
HANDICAP DIAGONAL SINK BASES 1 Door; No Drawers								
HDSBC36X36	BDC3636HH	1040	1092	1135	1160	1245	269	24.5
HDSBC42X42	BDC4242HH	1054	1107	1140	1148	1271	269	32.0
HDSB36X36	BDI3636HH	321	336	346	353	428	77	1.0
HDSB42X42	BDI4242HH	353	368	378	382	461	77	1.0
HANDICAP BASE ANGLE CABINETS BAL - Left Angle Cabinet; BAR - Right Angle Cabinet								
HBAC12L	BAL1224HH	714	749	771	781	881	104	6.0
HBAC12R	BAR1224HH	714	749	771	781	881	104	6.0

Handicap Accessible:

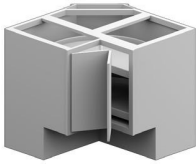
- Item Number - End with HA instead of HH.
- Model Number - Begin with HA instead of H.

BASES

BLZ:
Lazy Susan
w/ 165 Degree
Hinge
Ends: 18"
Tray: 28"



BDL:
Super Susan
w/ 165 Degree
Hinge
Ends: 23 1/4"
Tray: 32"



BMC:
Microwave
Opening
HH: 27" W x
13 3/4" H
HA: 27" W x 17
1/4" H



BTR:
1 Door
No Drawer
No Shelf



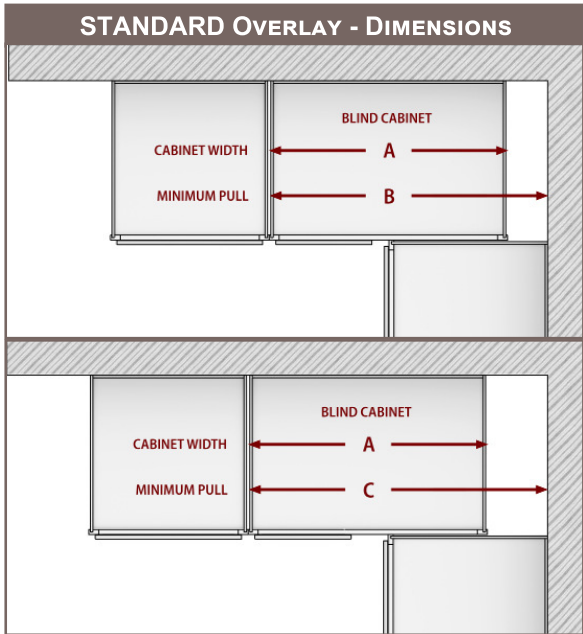
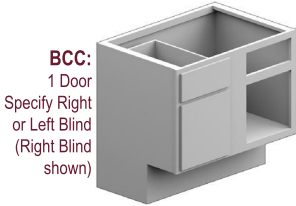
MODEL NUMBER	ITEM NUMBER	LIST PRICES					ADD TO LIST PRICE	CUBES
		Harmony Mission A	Durham Georgetown Vanderburgh Youngstown B	Kingston Urbana C	Classic Jamestown Rentown D	Williamsburg E	Premium All Wood Package Veneer not included	
HANDICAP 36 x 36 BASE CORNER CABINETS								
Optional Heavy Duty Lazy Susan Wooden Tray Upgrade: add \$1017 to List Price								
HBSL3333	BLZ3333HH	904	948	1005	1030	1148	235	14.0
HBSL3636	BLZ3636HH	924	967	1025	1053	1172	235	17.0
HSS36	BDL3636HH	1065	1105	1171	1187	1298	259	24.5
HANDICAP MICROWAVE BASE								
HBMC30	BMC3024HH	546	574	608	643	739	124	14.5
HANDICAP TRAY CABINET								
HBT9	BTR0924HH	305	318	337	377	451	66	4.5

Handicap Accessible:

- Item Number - End with HA instead of HH.
- Model Number - Begin with HA instead of H.

BLIND CORNER BASES

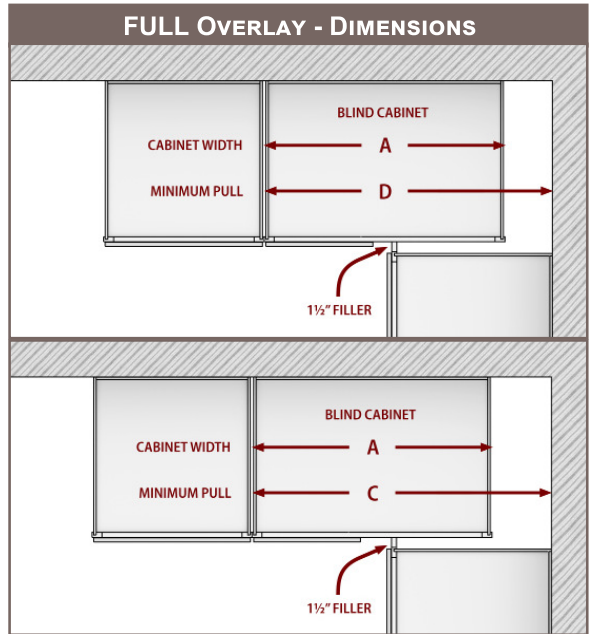
MODEL NUMBER	ITEM NUMBER	DIMENSIONS (See images below)				LIST PRICES					ADD TO LIST PRICE	CUBES
		Cab. Width A	Minimum S/O B	Maximum C	Minimum F/O D	Harmony Mission A	Durham Georgetown Vanderburgh Youngstown B	Kingston Urbana C	Classic Jamestown Rentown D	Williamsburg E	Premium All Wood Package Veneer not included	
HANDICAP BLIND CORNER BASE CABINETS												
HBCC36-39	BCC3624HH	27	37	39	38	441	462	490	540	627	113	13.0
HBCC39-42	BCC3924HH	30	39	42	40	451	475	504	552	641	113	14.5
HBCC42-45	BCC4224HH	36	42	45	43	465	484	513	571	661	113	17.0
HBCC45-48	BCC4524HH	42	45	48	46	477	497	527	589	682	113	20.0
HBCC48-51	BCC4824HH	48	48	51	49	524	545	578	631	724	113	23.0



NOTE: Dimensions in illustrations do not allow for hardware.

MINIMUM PULL ILLUSTRATIONS

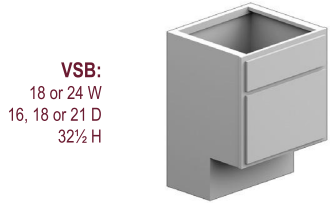
MAXIMUM PULL ILLUSTRATIONS



- Handicap Accessible:**
- Item Number - End with HA instead of HH.
 - Model Number - Begin with HA instead of H.

VANITIES

MODEL NUMBER	ITEM NUMBER	DRAWERS	LIST PRICES					ADD TO LIST PRICE	CUBES
			Harmony Mission A	Durham Georgetown Vanderburgh Youngstown B	Kingston Urbana C	Classic Jamestown Rentown D	Williamsburg E	Premium All Wood Package Veneer not included	
HANDICAP VANITY SINK BASES 18 - 24 W									
1 Door; No Drawers (Butt Door Optional on HVSB2418 or HVSB24)									
HVSB1816	VSB1816HH	0	358	375	398	430	514	90	6.0
HVSB1818	VSB1818HH	0	358	375	398	430	514	90	6.5
HVSB18	VSB1821HH	0	368	384	407	449	533	90	7.5
HVSB2418	VSB2418HH	0	370	385	408	451	535	90	9.0
HVSB24	VSB2421HH	0	375	389	412	469	550	90	10.0
HANDICAP VANITY SINK BASES 27 - 36 W									
Butt Doors; No Drawers									
HVSB27	VSB2721HH	0	385	403	427	476	557	110	11.5
HVSB30	VSB3021HH	0	396	414	439	480	563	110	12.5
HVSB33	VSB3321HH	0	419	438	464	511	596	110	14.0
HVSB36	VSB3621HH	0	441	461	489	542	629	110	15.0
HANDICAP VANITY SINK BASES 42 - 48 W									
2 Doors; No Drawers									
HVSB39	VSB3921HH	0	466	489	518	581	671	110	16.5
HVSB42	VSB4221HH	0	484	508	538	606	696	110	17.5
HVSB45	VSB4521HH	0	508	532	564	636	728	110	19.0
HVSB48	VSB4821HH	0	532	554	587	665	762	110	20.0
HANDICAP VANITY SINK BASES - TOP DRAWER 36 W									
Butt Doors; 1 Drawer on Each End NOTE: Full Height Door Option N/A									
HVBTD36	VBT3621HH	2	524	545	578	615	706	140	15.0
HANDICAP VANITY SINK BASES - TOP DRAWER 39 - 48 W									
2 Doors; 1 Drawer on Each End NOTE: Full Height Door Option N/A									
HVBTD39	VBT3921HH	2	529	550	583	624	714	140	16.5
HVBTD42	VBT4221HH	2	540	566	600	665	763	140	17.5
HVBTD48	VBT4821HH	2	580	609	646	701	797	140	20.0



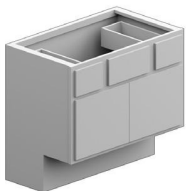
VS:
18 or 24 W
16, 18 or 21 D
32½ H



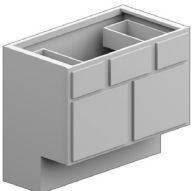
VS:
24 - 36 W
21 D
32½ H



VS:
42 - 48 W
21 D
32½ H



VB:
36 W
21 D
32½ H



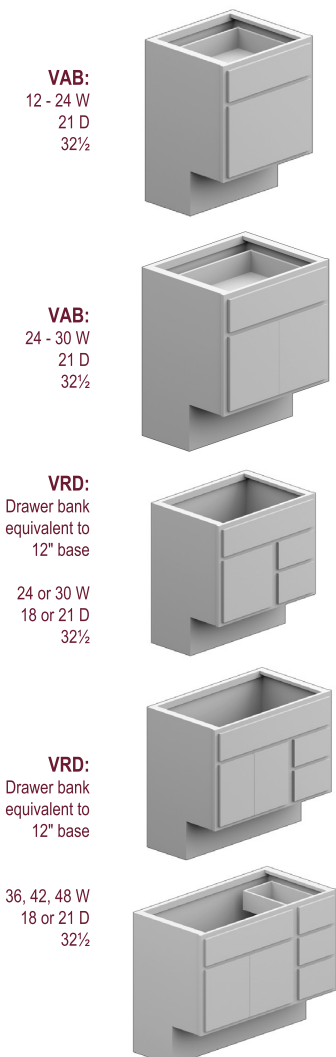
VB:
39 - 48 W
21 D
32½ H

All vanities include a finished toe kick.

Handicap Accessible:

- Item Number - End with HA instead of HH.
- Model Number - Begin with HA instead of H.

VANITIES



MODEL NUMBER	ITEM NUMBER	DRAWERS	LIST PRICES					ADD TO LIST PRICE	CUBES
			Harmony Mission A	Durham Georgetown Vanderburgh Youngstown B	Kingston Urbana C	Classic Jamestown Rentown D	Williamsburg E	Premium All Wood Package Veneer not included	
HANDICAP VANITY BASE CABINETS									
1 Door; 1 Drawer (Butt Door Optional on HVB24)									
HVB12	VAB1221HH	1	344	364	386	416	496	104	5.0
HVB15	VAB1521HH	1	368	384	407	426	508	104	6.0
HVB18	VAB1821HH	1	385	403	427	459	539	104	7.5
HVB21	VAB2121HH	1	398	416	441	466	546	104	9.0
HVB24	VAB2421HH	1	449	472	500	528	613	104	10.0
HANDICAP VANITY BASE CABINETS									
Butt Doors; 1 Drawer									
HVB27	VAB2721HH	2	466	486	515	542	629	124	11.0
HVB30	VAB3021HH	2	496	525	557	585	678	124	12.0
HANDICAP VANITY SINK BASES - DRAWER BANK (1 Door)									
NOTE 1: Full Height Door Option N/A NOTE 2: Specify VLD for Left Drawer Bank									
HVRDD2418	VRD2418HH	2	379	393	417	459	539	137	9.0
HVRDD24	VRD2421HH	2	412	430	456	496	587	137	10.0
HVRDD3018	VRD3018HH	2	459	479	508	556	644	137	11.0
HVRDD30	VRD3021HH	2	476	494	524	574	665	137	12.5
HANDICAP VANITY SINK BASES - DRAWER BANK (Butt Doors)									
NOTE 1: Full Height Door Option N/A NOTE 2: Specify VLD for Left Drawer Bank									
HVRDD3618	VRD3618HH	2	521	542	575	629	721	137	13.0
HVRDD36	VRD3621HH	2	526	547	580	637	731	137	15.0
HVRDD4218	VRD4218HH	3	599	629		665	763	216	15.5
HVRDD42	VRD4221HH	3	608	636	674	675	771	216	17.5
HVRDD48	VRD4821HH	3	617	647	686	732	778	216	20.0

All vanities include a finished toe kick.

Handicap Accessible:

- Item Number - End with HA instead of HH.
- Model Number - Begin with HA instead of H.

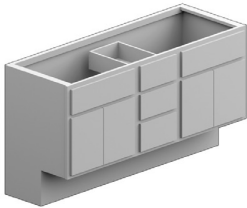
VANITIES

MODEL NUMBER	ITEM NUMBER	DRAWERS	LIST PRICES					ADD TO LIST PRICE	CUBES
			Harmony Mission A	Durham Georgetown Vanderburgh Youngstown B	Kingston Urbana C	Classic Jamestown Rentown D	Williamsburg E	Premium All Wood Package Veneer not included	
HANDICAP VANITY DRAWERS									
HVDB12	VDB1221HH	3	426	446	473	490	504	193	5.0
HVDB15	VDB1521HH	3	445	466	494	512	529	193	6.5
HVDB18	VDB1821HH	3	469	504	534	539	552	193	7.5
HVDB21	VDB2121HH	3	489	513	544	562	574	193	9.0
HVDB24	VDB2421HH	3	511	538	570	588	598	193	10.0
HANDICAP VANITY SINK BASES - CENTER DRAWER BANK Butt Doors on Each End; 3 Center Drawers									
HVCDD60	VCD6021HH	3	853	896	950	1051	1170	223	25.0
HANDICAP VANITY SINK BASES - DRAWER BANK EACH END Butt Doors; 3 Drawers on Each End									
HVEDDB4818	VED4818HH	6	689	722	765	846	949	283	17.5
HVEDDB48	VED4821HH	6	693	727	771	855	960	283	20.0
HVEDDB6018	VED6018HH	6	1035	1088	1153	1231	1359	359	21.5
HVEDDB60	VED6021HH	6	1053	1106	1172	1249	1379	359	25.0

VDB:
12 - 24 W
21 D
32½ H

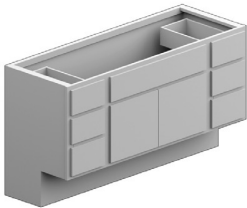


VCD:
Drawer bank equivalent to 12" base



60 W
21 D
32½

VED:
Drawer bank equivalent to 12" base



48 or 60 W
18 or 21 D
32½

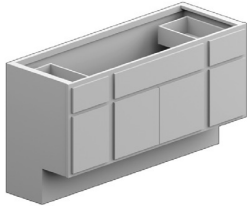
All vanities include a finished toe kick.

Handicap Accessible:

- Item Number - End with HA instead of HH.
- Model Number - Begin with HA instead of H.

VANITIES

VST:
54, 60, 72 W
21 D
32½



UH or UA:
18 W
21 D
80 H



MODEL NUMBER	ITEM NUMBER	DRAWERS	LIST PRICES					ADD TO LIST PRICE	CUBES
			Harmony Mission A	Durham Georgetown Vanderburgh Youngstown B	Kingston Urbana C	Classic Jamestown Rentown D	Williamsburg E	Premium All Wood Package Veneer not included	
HANDICAP VANITY STARTER CABINETS									
Center Butt Doors; 1 Door on Each End; 2 Drawers NOTE: Full Height Door N/A									
HVSTB54	VST5421HH	2	624	652	691	763	861	159	22.5
HVSTB60	VST6021HH	2	707	741	785	837	945	184	25.0
HVSTB72	VST7221HH	2	780	815	864	923	1030	206	30.0
HANDICAP UTILITY CABINET WITH DRAWERS									
Includes 3 Adj. Shelves									
HUT182180	UH2182180	2	851	888	941	1037	1151	239	18.5
HAUT182180	UA3182180	3	851	888	941	1037	1151	239	18.5

All vanities include a finished toe kick.

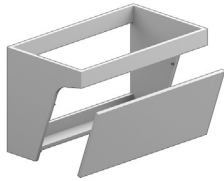
Handicap Accessible:

- Item Number - End with HA instead of HH.
- Model Number - Begin with HA instead of H.

WALL-MOUNT SINK BRACKETS

AFB:
24, 30, 33, 36,
42, or 48 W
21 or 24 D
22 H
Bottom: 8 D

REMOVABLE
FRONT



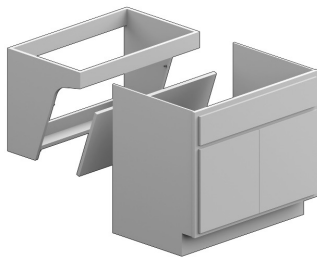
MODEL NUMBER	ITEM NUMBER	DESCRIPTION	LIST PRICES	
			ALL SPECIES/ PAINTED	CUBES
HANDICAP ACCESSIBLE WALL-MOUNT SINK BRACKETS				
AFB24	AFB242122E	24 X 21 X 22 HANDICAP BRACKET W/FRONT PANEL	587	7.0
AFB30	AFB302122E	30 X 21 X 22 HANDICAP BRACKET W/FRONT PANEL	608	8.0
AFB33	AFB332122E	33 X 21 X 22 HANDICAP BRACKET W/FRONT PANEL	617	9.5
AFB36	AFB362122E	36 X 21 X 22 HANDICAP BRACKET W/FRONT PANEL	629	10.0
AFB42	AFB422122E	42 X 21 X 22 HANDICAP BRACKET W/FRONT PANEL	641	12.0
AFB48	AFB482122E	48 X 21 X 22 HANDICAP BRACKET W/FRONT PANEL	653	14.0
AFB2424	AFB242422E	24 X 24 X 22 HANDICAP BRACKET W/FRONT PANEL	646	7.0
AFB3024	AFB302422E	30 X 24 X 22 HANDICAP BRACKET W/FRONT PANEL	669	9.5
AFB3324	AFB332422E	33 X 24 X 22 HANDICAP BRACKET W/FRONT PANEL	679	10.5
AFB3624	AFB362422E	36 X 24 X 22 HANDICAP BRACKET W/FRONT PANEL	692	11.5
AFB4224	AFB422422E	42 X 24 X 22 HANDICAP BRACKET W/FRONT PANEL	705	13.5
AFB4824	AFB482422E	48 X 24 X 22 HANDICAP BRACKET W/FRONT PANEL	718	15.5

REMOVABLE SINK BASES W/ BRACKETS

VBH:
24, 30, 33,
36 W
21 D
32½ H

REMOVABLE
BASE

HA Bracket:
W 1% less
than Cabinet
20 D
Bottom 8 D



MODEL NUMBER	ITEM NUMBER	LIST PRICES					ADD TO LIST PRICE	CUBES
		Harmony Mission A	Durham Georgetown Vanderburgh Youngstown B	Kingston Urbana C	Classic Jamestown Rentown D	Williamsburg E		
REMOVABLE SINK BASE / BRACKET COMBOS (Handicap Accessible ONLY) 2 Doors (EXCEPTION: 24W has 1 Door)								
VBH24	VBH2421HA	886	902	956	980	1063	90	10.0
VBH30	VBH3021HA	928	949	1006	1014	1095	110	12.5
VBH33	VBH3321HA	963	981	1040	1054	1141	110	14.0
VBH36	VBH3621HA	995	1014	1075	1096	1183	110	15.0

OVEN CABINETS

OHS:
Oven Opening:
Height = 25 1/4"
Width = 6" Less
than
Cabinet Width
(Trimable)

Drawers may
be removed for
Double Oven
Cabinet

27, 30, 33 W
24 D
84, 90, 96 H



MODEL NUMBER	ITEM NUMBER	LIST PRICES					ADD TO LIST PRICE	CUBES
		Harmony Mission A	Durham Georgetown Vanderburgh Youngstown B	Kingston Urbana C	Classic Jamestown Rentown D	Williamsburg E	Premium All Wood Package Veneer not included	
HANDICAP OVEN CABINETS								
Butt Doors								
HOC272484	OHS272484	981	1032	1094	1263	1393	287	33
HOC272490	OHS272490	1029	1079	1144	1320	1457	322	36
HOC272496	OHS272496	1075	1131	1199	1382	1519	322	38
HOC302484	OHS302484	1086	1140	1208	1392	1532	327	37
HOC302490	OHS302490	1137	1193	1265	1457	1604	355	40
HOC302496	OHS302496	1186	1243	1318	1527	1673	355	42
HOC332484	OHS332484	1186	1243	1318	1527	1673	355	41
HOC332490	OHS332490	1240	1302	1380	1599	1756	392	43
HOC332496	OHS332496	1296	1364	1446	1673	1828	392	46

NOTE: Shelf Kits N/A for 84" Oven Cabinets

A4-D = 1/2" Plywood

A6-D = 3/4" Plywood

A4-D-MWT = 1/2" Plywood

A6-D-MWT = 3/4" Plywood

MODEL NUMBER	ITEM NUMBER	LIST PRICE	CUBES
2-SHELF KITS (1/2" MDF)			
2SK2724	2SK2724A4X	129	0.4
2SK3024	2SK3024A4X	129	0.4
2SK3324	2SK3324A4X	129	0.5
WHITE 2-SHELF KITS (1/2" MDF)			
2SKW2724	2SK2724A4XWHX	129	0.4
2SKW3024	2SK3024A4XWHX	129	0.4
2SKW3324	2SK3324A4XWHX	129	0.5
PREMIUM 2-SHELF KITS (1/2" or 3/4" Plywood)			
2SK2724.5D	2SK2724A4D	186	0.4
2SK3024.5D	2SK3024A4D	186	0.4
2SK3324.5D	2SK3324A4D	186	0.5
2SK2724.75D	2SK2724A6D	313	0.6
2SK3024.75D	2SK3024A6D	313	0.6
2SK3324.75D	2SK3324A6D	313	0.7
WHITE PREMIUM 2-SHELF KITS (1/2" or 3/4" Plywood)			
2SKW2724.5D	2SK2724A4DWHX	186	0.4
2SKW3024.5D	2SK3024A4DWHX	186	0.4
2SKW3324.5D	2SK3324A4DWHX	186	0.5
2SKW2724.75D	2SK2724A6DWHX	313	0.6
2SKW3024.75D	2SK3024A6DWHX	313	0.6
2SKW3324.75D	2SK3324A6DWHX	313	0.7

Handicap Accessible:

Oven Cabinets - Specify OAS instead of OHS.

Model Number - Begin with HA instead of H.

UTILITY CABINETS

MODEL NUMBER	ITEM NUMBER	LIST PRICES					ADD TO LIST PRICE	CUBES
		Harmony Mission A	Durham Georgetown Vanderburgh Youngstown B	Kingston Urbana C	Classic Jamestown Rentown D	Williamsburg E	Premium All Wood Package <small>Veneer not included</small>	
84" TALL HANDICAP UTILITY CABINETS (Butt Doors Optional on 24" W)								
HUC151284	UHC151284	561	584	619	694	795	143	9.5
HUC151884	UHC151884	592	622	659	738	840	153	14.0
HUC152184	UHC152184	616	647	686	766	871	159	16.5
HUC152484	UHC152484	616	647	686	766	871	159	18.5
HUC181284	UHC181284	599	626	664	742	844	153	11.5
HUC181884	UHC181884	634	664	704	787	892	162	17.0
HUC182184	UHC182184	657	690	731	818	923	169	19.5
HUC182484	UHC182484	657	690	731	818	923	169	22.0
HUC211284	UHC211284	724	753	798	888	994	180	13.5
HUC211884	UHC211884	762	797	845	939	1046	192	19.5
HUC212184	UHC212184	788	826	876	972	1082	200	22.5
HUC212484	UHC212484	788	826	876	972	1082	200	26.0
HUC241284	UHC241284	805	837	887	987	1096	200	15.5
HUC241884	UHC241884	848	885	938	1040	1151	212	22.5
HUC242184	UHC242184	876	913	968	1074	1190	222	26.0
HUC242484	UHC242484	876	913	968	1074	1190	222	29.5
90" TALL HANDICAP UTILITY CABINETS (Butt Doors Optional on 24" W)								
HUC151290	UHC151290	616	647	686	773	876	159	10.5
HUC151890	UHC151890	657	689	730	823	930	164	15.0
HUC152190	UHC152190	682	715	758	855	963	169	17.5
HUC152490	UHC152490	682	715	758	855	963	169	20.0
HUC181290	UHC181290	673	704	746	823	927	174	12.5
HUC181890	UHC181890	713	748	793	874	981	186	18.0
HUC182190	UHC182190	739	777	824	907	1018	192	21.0
HUC182490	UHC182490	739	777	824	907	1018	192	23.5
HUC211290	UHC211290	844	881	934	974	1086	216	14.5
HUC211890	UHC211890	860	897	951	1030	1145	222	21.0
HUC212190	UHC212190	871	909	964	1068	1184	225	24.5
HUC212490	UHC212490	871	909	964	1068	1184	225	27.5
HUC241290	UHC241290	958	997	1057	1075	1191	245	16.5
HUC241890	UHC241890	1018	1057	1120	1137	1252	250	24.0
HUC242190	UHC242190	1054	1096	1162	1175	1294	253	27.5
HUC242490	UHC242490	1054	1096	1162	1175	1294	253	31.5



UHC:
18 - 24 W
12 - 24 D
84 H



UHC:
18 - 24 W
12 - 24 D
90 H

Handicap Accessible:
Utility Cabinets - Specify UAC instead of UHC.

Model Number - Begin with HA instead of H.

UTILITY CABINETS

MODEL NUMBER	ITEM NUMBER	LIST PRICES					ADD TO LIST PRICE	CUBES
		Harmony Mission A	Durham Georgetown Vanderburgh Youngstown B	Kingston Urbana C	Classic Jamestown Rentown D	Williamsburg E	Premium All Wood Package Veneer not included	
96" TALL HANDICAP UTILITY CABINETS (Butt Doors Optional on 24" W)								
HUC151296	UHC151296	696	732	776	881	988	179	11.0
HUC151896	UHC151896	741	778	825	935	1050	187	16.0
HUC152196	UHC152196	771	811	860	973	1091	193	18.5
HUC152496	UHC152496	771	811	860	973	1091	193	21.0
HUC181296	UHC181296	755	791	838	930	1040	194	13.0
HUC181896	UHC181896	801	839	889	988	1103	207	19.0
HUC182196	UHC182196	832	872	924	1026	1145	217	22.0
HUC182496	UHC182496	832	872	924	1026	1145	217	25.0
HUC211296	UHC211296	932	974	1032	1084	1198	243	15.5
HUC211896	UHC211896	951	994	1054	1147	1268	250	22.5
HUC212196	UHC212196	962	1007	1067	1190	1315	253	26.0
HUC212496	UHC212496	962	1007	1067	1190	1315	253	29.5
HUC241296	UHC241296	1051	1098	1164	1184	1305	276	17.5
HUC241896	UHC241896	1117	1165	1235	1253	1379	283	25.5
HUC242196	UHC242196	1161	1208	1280	1298	1428	287	29.5
HUC242496	UHC242496	1161	1208	1280	1298	1428	287	33.5
HANDICAP UTILITY CABINETS Butt Doors								
HUC302484	UHC302484	1397	1544	1637	1775	1936	442	36.5
HUC302490	UHC302490	1548	1631	1729	1966	2142	468	39.5
HUC302496	UHC302496	1728	1820	1929	2199	2390	528	42.0
HUC362184	UHC362184	1731	1914	2029	2203	2404	553	38.5
HUC362190	UHC362190	1919	2022	2143	2442	2661	585	41.25
HUC362196	UHC362196	2144	2259	2395	2733	2969	660	44.0
HUC362484	UHC362484	1731	1914	2029	2203	2404	553	43.75
HUC362490	UHC362490	1919	2022	2143	2442	2661	585	47
HUC362496	UHC362496	2144	2259	2395	2733	2969	660	50



UHC:
18 - 24 W
12 - 24 D
96 H



UHC:
24, 30, or 36 W
24 D
84, 90, 96 H

Handicap Accessible:
Utility Cabinets - Specify UAC instead of UHC.
Model Number - Begin with HA instead of H.



4-SHELF KITS			
MODEL NUMBER	ITEM NUMBER	DESCRIPTION	LIST PRICE
4-SHELF KITS (1/2" MDF)			
4SK1224	4SK1224A4X	4-12 X 24 SHELF KIT PARTICLEBOARD	144
4SK1512	4SK1512A4X	4-15 X 12 SHELF KIT PB	123
4SK1518	4SK1518A4X	4-15 X 18 SHELF KIT PARTICLEBOARD	133
4SK1521	4SK1521A4X	4-15 X 21 SHELF KIT PARTICLEBOARD	141
4SK1524	4SK1524A4X	4-15 X 24 SHELF KIT PARTICLEBOARD	150
4SK1812	4SK1812A4X	4-18 X 12 SHELF KIT PARTICLEBOARD	129
4SK1818	4SK1818A4X	4-18 X 18 SHELF KIT PARTICLEBOARD	137
4SK1821	4SK1821A4X	4-18 X 21 SHELF KIT PARTICLEBOARD	146
4SK1824	4SK1824A4X	4-18 X 24 SHELF KIT PARTICLEBOARD	154
4SK2112	4SK2112A4X	4-21 X 12 SHELF KIT PARTICLEBOARD	139
4SK2118	4SK2118A4X	4-21 X 18 SHELF KIT PARTICLEBOARD	146
4SK2121	4SK2121A4X	4-21 X 21 SHELF KIT PARTICLEBOARD	153
4SK2124	4SK2124A4X	4-21 X 24 SHELF KIT PARTICLEBOARD	158
4SK2412	4SK2412A4X	4-24 X 12 SHELF KIT PARTICLEBOARD	147
4SK2418	4SK2418A4X	4-24 X 18 SHELF KIT PARTICLEBOARD	153
4SK2421	4SK2421A4X	4-24 X 21 SHELF KIT PARTICLEBOARD	158
4SK2424	4SK2424A4X	4-24 X 24 SHELF KIT PARTICLEBOARD	162
4SK3024	4SK3024A4X	4-30 X 24 SHELF KIT PARTICLEBOARD	246
4SK3624	4SK3624A4X	4-36 X 24 SHELF KIT PARTICLEBOARD	285
4-SHELF KITS (3/4" MDF)			
4SK1224.75	4SK1224A6X	4-12 X 24 SHELF KIT MDF 3/4"	186
4SK1512.75	4SK1512A6X	4-15 X 12 SHELF KIT MDF 3/4"	151
4SK1518.75	4SK1518A6X	4-15 X 18 SHELF KIT PB 3/4"	161
4SK1521.75	4SK1521A6X	4-15 X 21 SHELF KIT MDF 3/4"	183
4SK1524.75	4SK1524A6X	4-15 X 24 SHELF KIT MDF 3/4"	195
4SK1812.75	4SK1812A6X	4-18 X 12 SHELF KIT MDF 3/4"	160
4SK1818.75	4SK1818A6X	4-18 X 18 SHELF KIT MDF 3/4"	171
4SK1821.75	4SK1821A6X	4-18 X 21 SHELF KIT MDF 3/4"	183
4SK1824.75	4SK1824A6X	4-18 X 24 SHELF KIT MDF 3/4"	195
4SK2112.75	4SK2112A6X	4-21 X 12 SHELF KIT MDF 3/4"	172
4SK2118.75	4SK2118A6X	4-21 X 18 SHELF KIT MDF 3/4"	183
4SK2121.75	4SK2121A6X	4-21 X 21 SHELF KIT MDF 3/4"	192
4SK2124.75	4SK2124A6X	4-21 X 24 SHELF KIT MDF 3/4"	199
4SK2412.75	4SK2412A6X	4-24 X 12 SHELF KIT MDF 3/4"	185
4SK2418.75	4SK2418A6X	4-24 X 18 SHELF KIT MDF 3/4"	192
4SK2421.75	4SK2421A6X	4-24 X 21 SHELF KIT MDF 3/4"	199
4SK2424.75	4SK2424A6X	4-24 X 24 SHELF KIT MDF 3/4"	206
4SK3024.75	4SK3024A6X	4-30 X 24 SHELF KIT MDF 3/4"	307
4SK3624.75	4SK3624A6X	4-36 X 24 SHELF KIT MDF 3/4"	356

White Shelf Kits (same price)

- Model Number : Begin with "4SKW"
- Item Number : End with "WHX"



4-SHELF KITS			
MODEL NUMBER	ITEM NUMBER	DESCRIPTION	LIST PRICE
PREMIUM 4-SHELF KITS (1/2" Plywood)			
4SK1224.5D	4SK1224A4D	4-12 X 24 SHELF KIT PLYWOOD	207
4SK1512.5D	4SK1512A4D	4-15 X 12 SHELF KIT PLYWOOD	177
4SK1518.5D	4SK1518A4D	4-15 X 18 SHELF KIT PLYWOOD	190
4SK1521.5D	4SK1521A4D	4-15 X 21 SHELF KIT PLYWOOD	202
4SK1524.5D	4SK1524A4D	4-15 X 24 SHELF KIT PLYWOOD	219
4SK1812.5D	4SK1812A4D	4-18 X 12 SHELF KIT PLYWOOD	190
4SK1818.5D	4SK1818A4D	4-18 X 18 SHELF KIT PLYWOOD	203
4SK1821.5D	4SK1821A4D	4-18 X 21 SHELF KIT PLYWOOD	216
4SK1824.5D	4SK1824A4D	4-18 X 24 SHELF KIT PLYWOOD	231
4SK2112.5D	4SK2112A4D	4-21 X 12 SHELF KIT PLYWOOD	206
4SK2118.5D	4SK2118A4D	4-21 X 18 SHELF KIT PLYWOOD	216
4SK2121.5D	4SK2121A4D	4-21 X 21 SHELF KIT PLYWOOD	227
4SK2124.5D	4SK2124A4D	4-21 X 24 SHELF KIT PLYWOOD	237
4SK2412.5D	4SK2412A4D	4-24 X 12 SHELF KIT PLYWOOD	221
4SK2418.5D	4SK2418A4D	4-24 X 18 SHELF KIT PLYWOOD	230
4SK2421.5D	4SK2421A4D	4-24 X 21 SHELF KIT PLYWOOD	237
4SK2424.5D	4SK2424A4D	4-24 X 24 SHELF KIT PLYWOOD	244
4SK3024.5D	4SK3024A4D	4-30 X 24 SHELF KIT PLYWOOD	370
4SK3624.5D	4SK3624A4D	4-36 X 24 SHELF KIT PLYWOOD	429
PREMIUM 4-SHELF KITS (3/4" Plywood)			
4SK1224.75D	4SK1224A6D	4-12 X 24 SHELF KIT 3/4 PLYWOOD	282
4SK1512.75D	4SK1512A6D	4-15 X 12 SHELF KIT PB 3/4 PLYWOOD	264
4SK1518.75D	4SK1518A6D	4-15 X 18 SHELF KIT PB 3/4 PLYWOOD	218
4SK1521.75D	4SK1521A6D	4-15 X 21 SHELF KIT PLYWOOD 3/4"	285
4SK1524.75D	4SK1524A6D	4-15 X 24 SHELF KIT PLYWOOD 3/4"	297
4SK1812.75D	4SK1812A6D	4-18 X 12 SHELF KIT PLYWOOD 3/4"	282
4SK1818.75D	4SK1818A6D	4-18 X 18 SHELF KIT PLYWOOD 3/4"	293
4SK1821.75D	4SK1821A6D	4-18 X 21 SHELF KIT PLYWOOD 3/4"	300
4SK1824.75D	4SK1824A6D	4-18 X 24 SHELF KIT PLYWOOD 3/4"	312
4SK2112.75D	4SK2112A6D	4-21 X 12 SHELF KIT PLYWOOD 3/4"	306
4SK2118.75D	4SK2118A6D	4-21 X 18 SHELF KIT PLYWOOD 3/4"	316
4SK2121.75D	4SK2121A6D	4-21 X 21 SHELF KIT PLYWOOD 3/4"	328
4SK2124.75D	4SK2124A6D	4-21 X 24 SHELF KIT PLYWOOD 3/4"	336
4SK2412.75D	4SK2412A6D	4-24 X 12 SHELF KIT PLYWOOD 3/4"	329
4SK2418.75D	4SK2418A6D	4-24 X 18 SHELF KIT PLYWOOD 3/4"	341
4SK2421.75D	4SK2421A6D	4-24 X 21 SHELF KIT PLYWOOD 3/4"	351
4SK2424.75D	4SK2424A6D	4-24 X 24 SHELF KIT PLYWOOD 3/4"	423
4SK3024.75D	4SK3024A6D	4-30 X 24 SHELF KIT PLYWOOD 3/4"	549
4SK3624.75D	4SK3624A6D	4-36 X 24 SHELF KIT PLYWOOD 3/4"	637

White Shelf Kits (same price)

- Model Number : Begin with "4SKW"
- Item Number : End with "WHX"

TOE KICKS AND PANELS

MODEL NUMBER	ITEM NUMBER	DESCRIPTION	LIST PRICES	ADD TO LIST PRICE	CUBES
			ALL SPECIES/ PAINTED	Premium All Wood Package <small>Veneer not included</small>	
HANDICAP TOE KICKS					
HTK8P	ATH08A2P	TOEKICK 9-HH *PC*	84	---	0.1
HTK8B	ATH08A2B	TOEKICK 9-HH 12/BOX	650	---	1.0
HATK8P	ATA08A2P	TOEKICK 5.5-HA *PC*	45	---	0.1
HATK8B	ATA08A2B	TOEKICK 5.5-HA 12/BOX	325	---	1.0
HANDICAP PANELS END AND DISHWASHER					
HDWP1.5	APD0124HHE	24 X 32.5 DISHWASHER PANEL W/ 1.5 FILLER	141	31	1.0
HDWP3	APD0324HHE	24 X 32.5 DISHWASHER PANEL W/ 3 FILLER	146	31	2.0
BEP32X.75	PMV2432A6E	.75 X 24 X 32.5 END PANEL W/ EDGE BANDING	270	---	1.0
HANDICAP ACCESSIBLE PANELS END AND DISHWASHER					
HADWP1.5	APD0124HAE	24 X 32.5 DISHWASHER PANEL W/ 1.5 FILLER	141	31	1.0
HADWP3	APD0324HAE	24 X 32.5 DISHWASHER PANEL W/ 3 FILLER	146	31	2.0
BEP32X.75	PMV2432A6E	.75 X 24 X 32.5 END PANEL W/ EDGE BANDING	270	---	1.0

** All Panels on this page: Painted colors are laminated.

NOTES

KOUNTRY WOOD PRODUCTS

352 Shawnee St. - Nappanee, IN 46550

Toll Free: 1-888-608-8969

Phone: 574-773-5673

Fax: 574-773-7013

www.kountrywood.com

AMERICAN MADE CABINETRY

Discover the Differences

Experience the Beauty

Enjoy all the Options

Kountry
WOOD

CABINETS WORTH OWNING



ANSI/KCMA A161.1

Revision A.1

Published January, 2024

Prices valid starting January 2, 2024

Prices are finalized upon confirmed orders only



KITCHEN CABINET MANUFACTURERS ASSOCIATION
ENVIRONMENTAL STEWARDSHIP PROGRAM (ESP)
ALL PRODUCTS IMPACT THE ENVIRONMENT
FOR ESP PROGRAM CRITERIA, VISIT KCMA.ORG